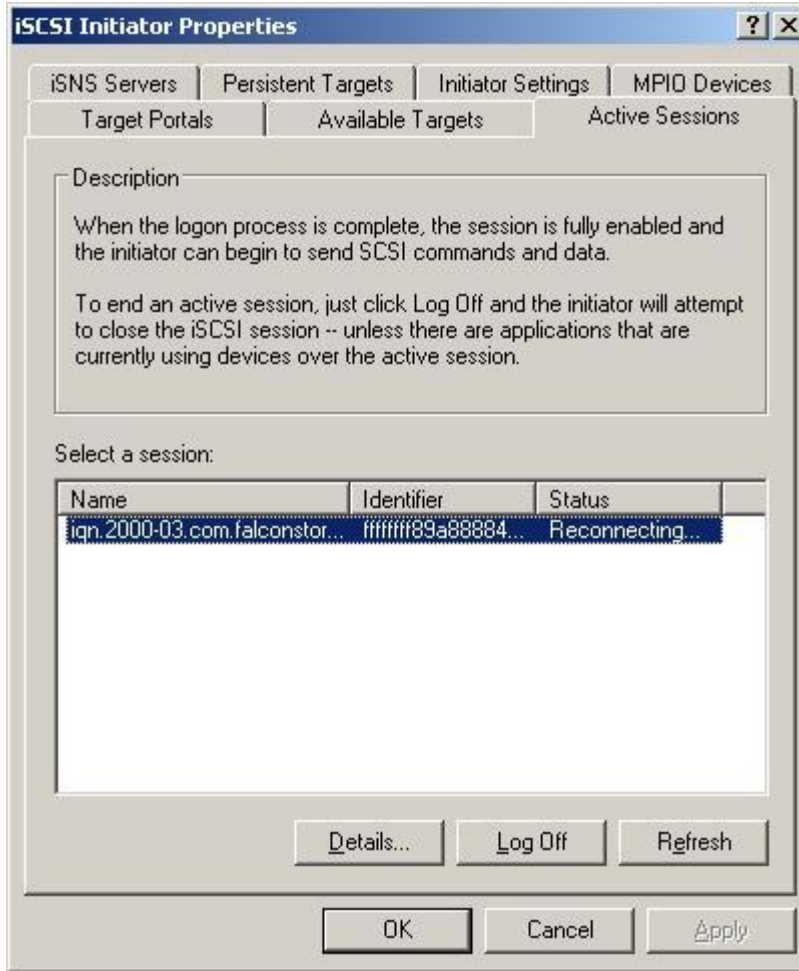


## Microsoft iSCSI Initiator Reconnect Issue Workarounds

These work arounds have been developed by Alacritech and some of our customers, perhaps without fully understanding the implications of the solution, and so they may not be appropriate for all environments. In other words, your mileage may vary. Also, they are based on the use of the Microsoft iSCSI Initiator version 1.05a.

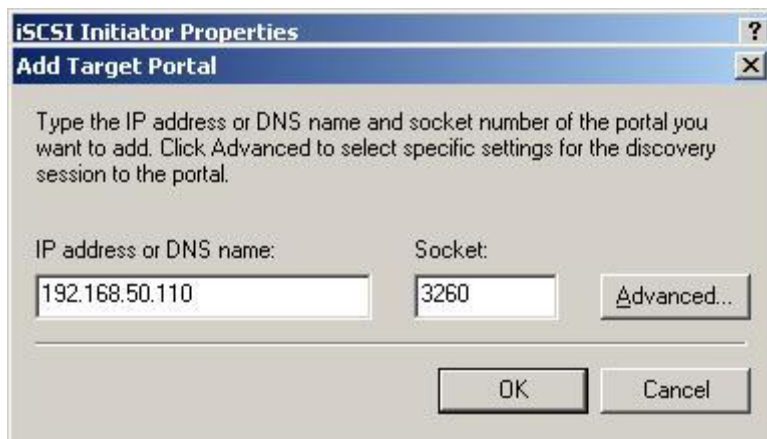
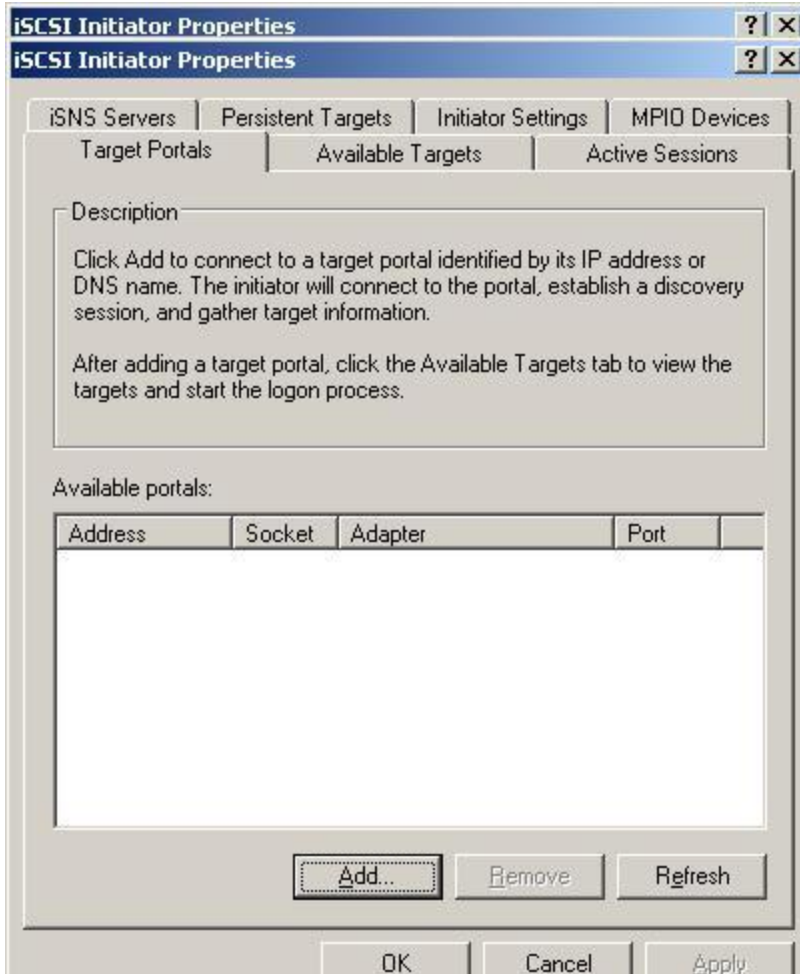
If upon reboot your iSCSI luns come up in the "reconnecting" state:



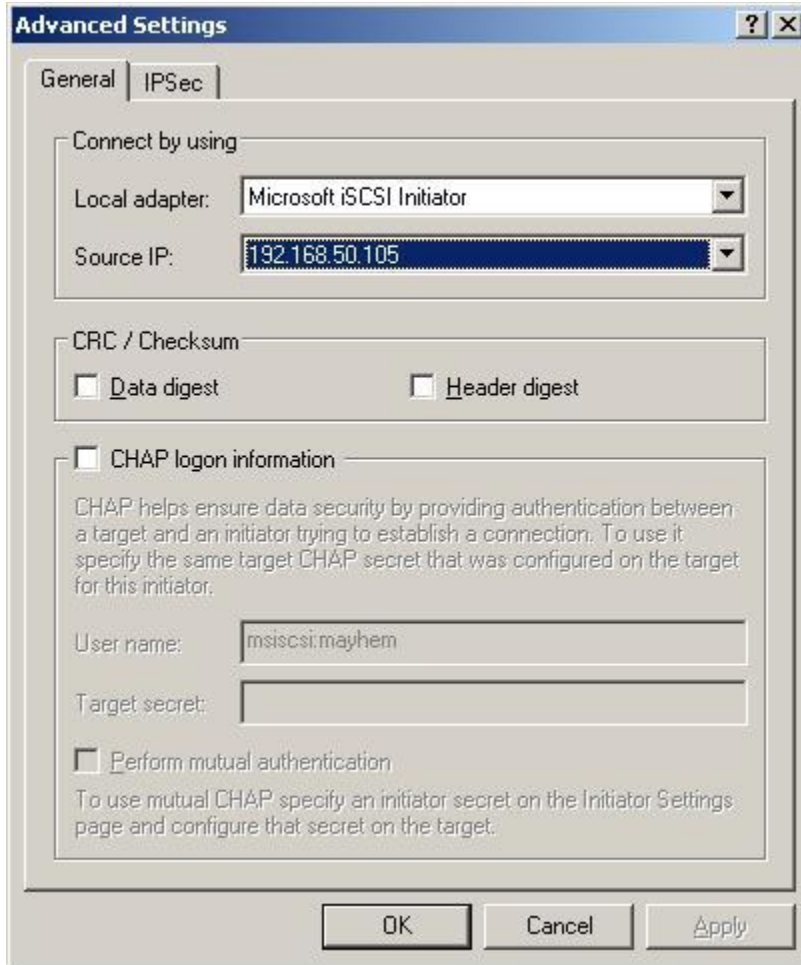
And you've verified that the entire underlying network is functioning correctly, the following workarounds may alleviate the problem:

First, log off of all active sessions and remove all persistent targets and target portals.

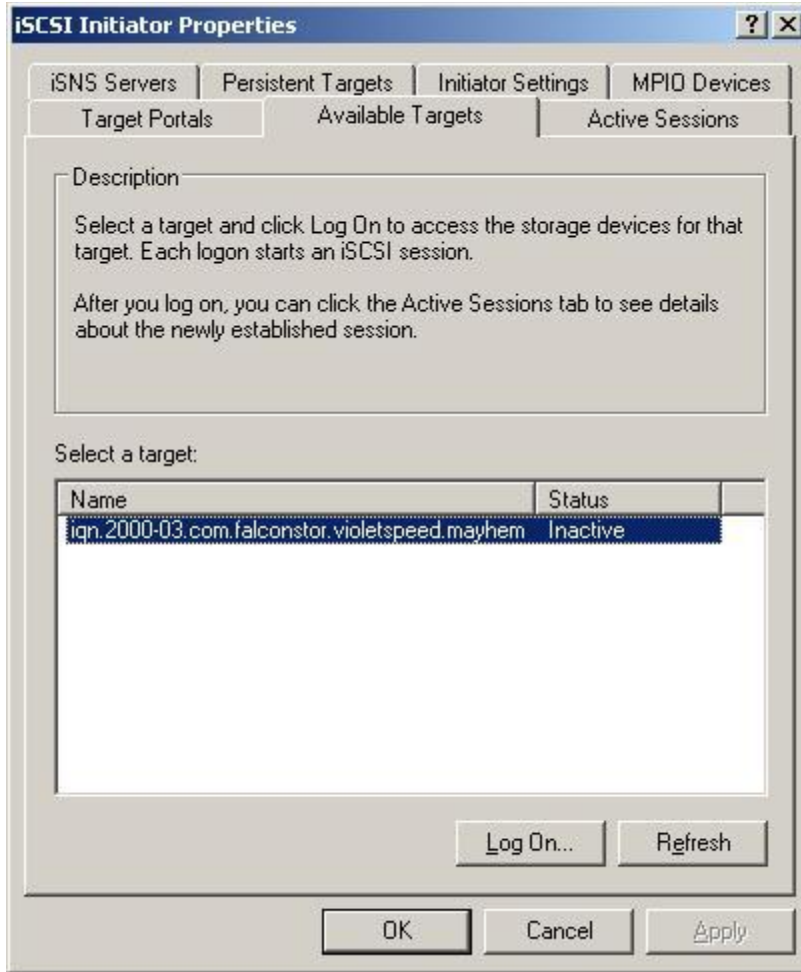
Next re-add portals.



Click on the **Advanced** tab to force use of the MS iSCSI initiator and the specific network interface.



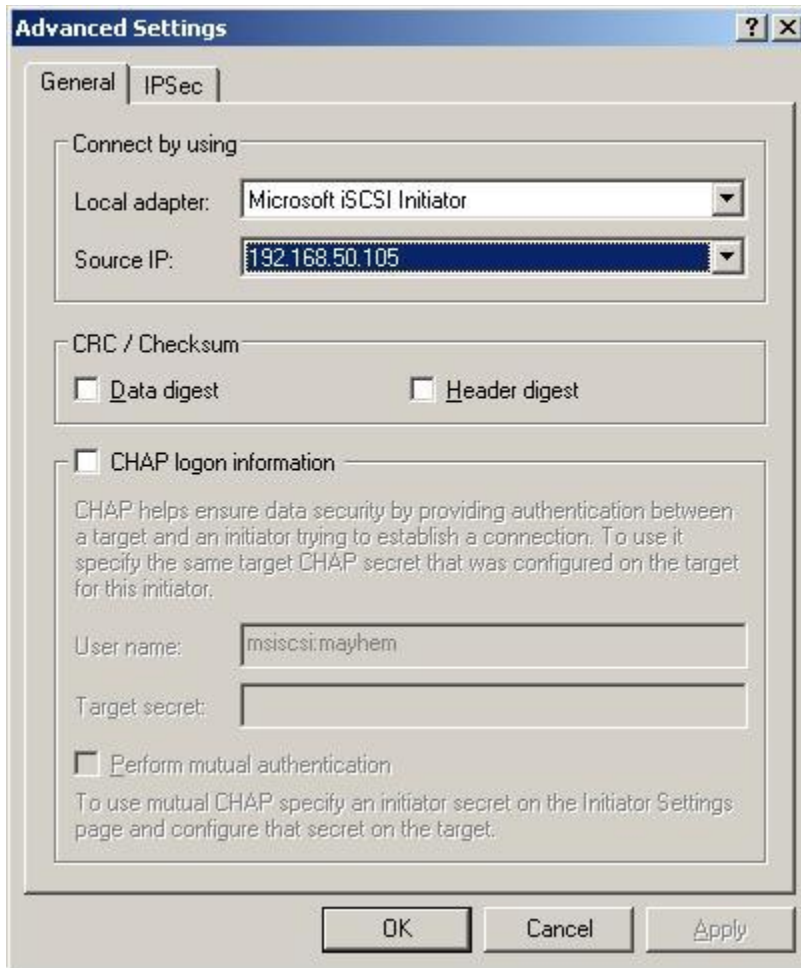
Repeat this process when you first log on to target.



Don't check the multi-path box unless you are doing multi-path. It is recommended to not use multi-path unless you are using the MS 2.0 or later initiator.



Force the interface to use.



Finally, reboot the system to test that the work around is operational.

If none of the above clears up the issues, but things are operational using a non-Alacritech Initiator or you have disabled the Alacritech FastPath driver, please contact Alacritech Support at [support@alacritech.com](mailto:support@alacritech.com).